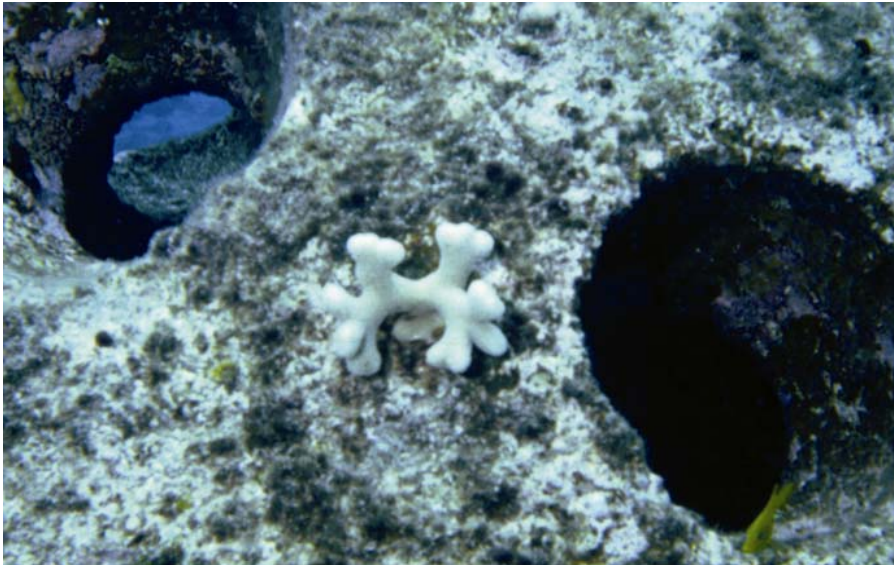


**Portomarea Marine Monitoring Reef Ball Coral Plugs  
West side of bay, Cluster 10  
October 2002**

Finger coral plug on Ultra transplanted march 2001.



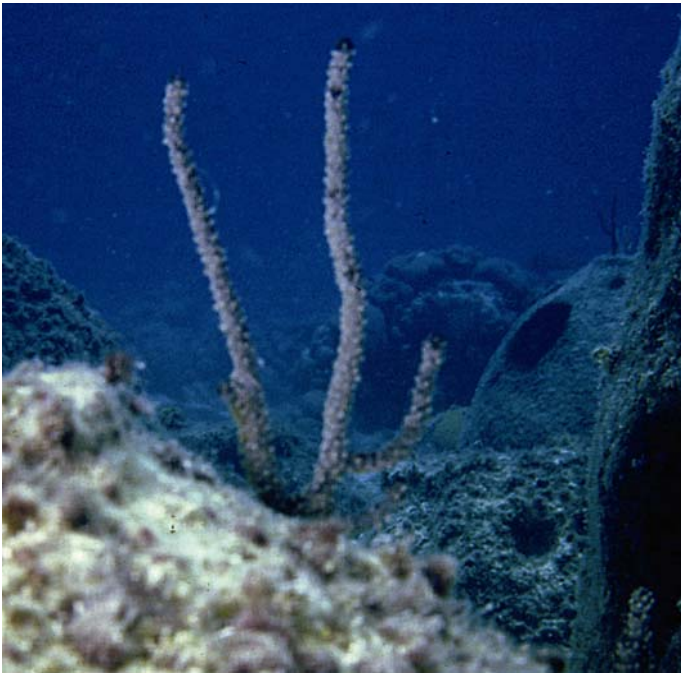
July 2002 survey period.



October 2002 survey period.

**Portomarea Marine Monitoring Reef Ball Coral Plugs  
West side of bay, Cluster 10  
October 2002**

Purple Sea Rod transplanted march 2001.



July 2002 survey period.



October 2002 survey period.



**Portomarea Marine Monitoring Reef Ball Coral Plugs  
West side of bay, Cluster 10  
October 2002**

Staghorn coral plug transplanted march 2001.



July 2002 survey period.



October 2002 survey period.  
(photo angle rotated 45 degrees clockwise).

**Portomarea Marine Monitoring Reef Ball Coral Plugs  
West side of bay, Cluster 10  
October 2002**

Staghorn coral plug transplanted march 2001.



July 2002 survey period.  
Algae on branches.

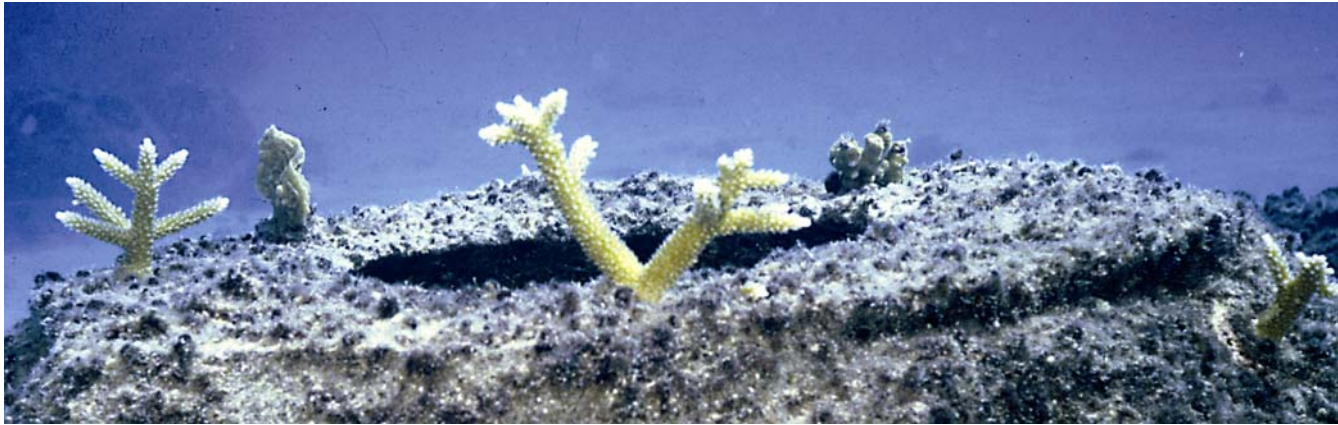


October 2002 survey period.  
Algae gone.



**Portomarea Marine Monitoring Reef Ball Coral Plugs  
East side of bay, Cluster 12  
October 2002**

Staghorn, Pencil and Lettuce coral plugs transplanted February 2002.



July 2002 survey period.



October 2002 survey period.