

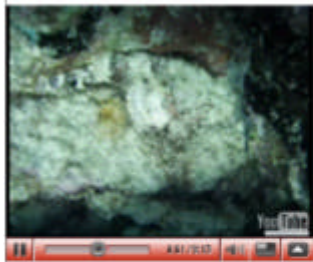
|6(\$5&+ %/2\*|| )/\$\* %/2\*| 1H[ WQRJ<sup>a</sup>

&UHDVH%QJ 6LJO ,Q

# &DUEEHDOV 6FLHOFH DOG \$ UW

0 ROGD\ 0 DFK

3\$ %DUEGRVZ LWQR FRUDOHIVZ LQD  
UHVXQDQ OR EHDFKHV KDWK Z DYH  
HOYLUROP HOW IHZ HUILVK VFDQWRXUWV  
IHZ NREV DOG D WVKJJQJ HFRORP \



5 HSLQMG IURP &DUEEHDO1 HW

1 HZ VFDUEEHDOOHQHZ V FRP

&RUDV QONHG VR QFDQFRRP \  
VD\ V%DUEGRVFRDMQROH  
RIIFLDO

3XEQKHG RQ0 ROGD\ 0 DFK

%5,'\*(72: 1 DUEGRV% ,6 3\$

%DUEGRVZ LWQR FRUDOHIVZ LQD  
UHVXQDQ OR EHDFKHV KDWK Z DYH  
HOYLUROP HOW IHZ HUILVK

)(( ' - , 7  
5 HFRP P HOGHG  
5 HDGLOJ

9LVVUVVR VKLV SDJ HDOR QHG  
) HHGMM QDUCLOJ DERXVVLV  
SDJH &KHFNEFDNLQDIHZ  
P LOXMM IRUHFRP P HOGHG  
UHDGLOJ

&QEN VR JHMV) (( ' - , 7



&KRRVHDQJXDJHVR  
VUQVQMM VKLV SDJH



Select to language

)(( ' - , 7 /LYH3DJH  
3RSXQULW

3RSXQJ3DJHV 7RGD\

&DUE HDQV 6FIHQFH DOG  
\$UW

&DUE HDQV 6FIHQFH DOG  
\$UW&DUE HDQ

HOGDOJ HUHG VSHFLW  
UHSVQV H[ VQFVRO  
KDOGERRN

&DUE HDQV 6FIHQFH DOG  
\$UWHDG =ROHV QHJU  
FDUEEHDO VHD LQ

GDV DMF  
H[ SDOVRO

&DUE HDQV 6FIHQFH DOG  
\$UWQ VKH FDUEEHDO

+DLVDOG \* X\DOQ  
RFFXS\ VKHERWRP QWV  
RI FRXQMLHV

&DUE HDQV 6FIHQFH DOG  
\$UW\* 527285, 60 , 6

%\$&. +2/( , 1 7+(  
&\$5, %\$1 7285, 67  
, 1' 8675 < 1 \$6\$8

\* 8\$5' , \$1

&DUE HDQV 6FIHQFH DOG